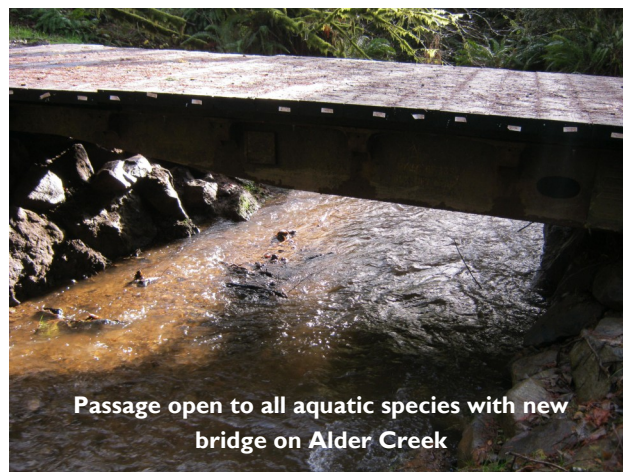


## 2010 Wrap-Up & Rolling into 2011...

Once again I find myself full of appreciation for our members and partners as I look back over the previous year and full of excitement for the new year. Last month you received a letter that summarized some of the 2010 achievements in numbers. Thank you to everyone who responded. In this newsletter, you will hear a bit more about the projects represented in the numbers listed in the letter and you will see a map of our accomplishments.

### Restoration

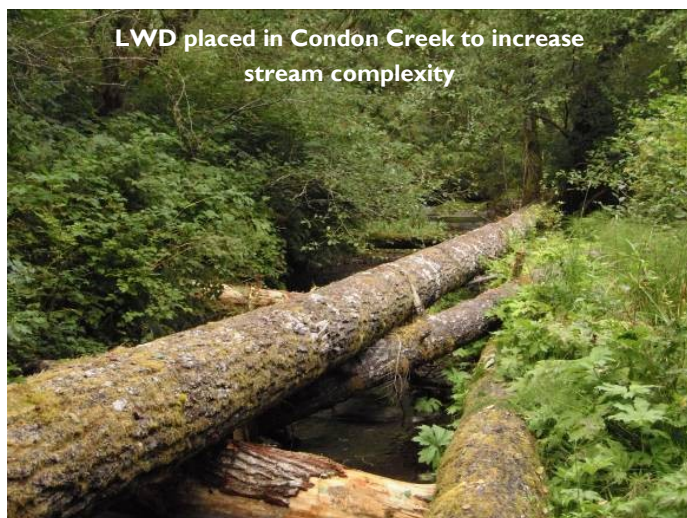
Stream complexity and aquatic species passage are identified as limiting factors for salmon and watershed health in the Siuslaw and Coastal Lakes. The SWC and partners implemented many large woody debris (LWD) and culvert replacement projects to address stream complexity throughout our watersheds in 2010. Over 400 large diameter logs were placed in Knowles Creek in October using a heavy lift helicopter. In Alder Creek which is in the Siltcoos Lake watershed and in Condon Creek, a tributary of the North Fork Siuslaw, projects placed LWD and replaced fish-barrier culverts with railcar bridges. The bridges allow for the passage of all



Passage open to all aquatic species with new bridge on Alder Creek

aquatic species and the more natural movement of debris and sediment transport. Two barrier culverts were replaced with road bridges on Knapp Creek in the Wildcat 5th-field watershed. Many small culverts were removed or replaced in the Condon and Swamp Creek sub-basins which will result in better management of sediment. All of these projects have a riparian planting component. In addition to the riparian component of the aforementioned projects, the annual Native Riparian Plant Distribution was once again successful in 2010 and preparations are well underway for 2011. Our Restoration Field Crew has contributed to the success of many of the riparian plantings.

For 2011, designs are ready for replacements of barrier culverts with a bridge on Swamp Creek and a culvert on a tributary of Whittaker Creek. A project which includes LWD, turtle habitat, and riparian fencing and planting will be implemented on Hawley Creek in the coming months. The SWC and partners will continue with preliminary monitoring and data collection to help us prepare for the restoration on Waite Ranch. Proposals have been submitted for design or implementation of several projects throughout the Siuslaw and Coastal Lakes for 2011 and beyond.



LWD placed in Condon Creek to increase stream complexity



## Siuslaw Watershed Council

Tel: 541-268-3044

Fax 268-3045

### Staff

#### Coordinator/Executive Director

Liz Vollmer-Buhl  
coordinator@siuslaw.org

#### Projects Managers

Katie Neall  
monitoring@siuslaw.org  
restoration@siuslaw.org

Mizu Burruss

education@siuslaw.org  
camp@siuslaw.org

#### GIS Specialist

Sean Brown  
gis@siuslaw.org

#### Office and Program Specialist

Ginger Cloutier  
watershed@siuslaw.org  
nativeplants@siuslaw.org

#### 2010 Executive Committee

**Chair:** Steve Elliot

**Vice Chair:** Dave Eisler

**Secretary:** Wesley Voth

**Treasurer:** Nancy Nichols

#### Representatives:

Barbara Beers  
Cindy Chambers  
Jim Grano  
Ray Kinney  
Gus Gates

### Monitoring

Data collection continued for the 11th year of the SWC Volunteer Water Quality Monitoring Program and for the long-term multi-partner Knowles Creek Smolt Trap. Both projects will carry-on in 2011. A new project which examines harmful algal blooms (HABs) on the Coastal Lakes started in 2010 and will continue into 2011.

### Education

The summer of 2010 brought another successful round of the Siuslaw Watershed Exploration Camps, with area students getting to learn about and explore the scientific, human, and geographic complexities of our watershed. We look forward to the summer 2011 camps. The SWC

provided watershed science sessions for a third year to the students enrolled in the Learning, Enrichment and Fun (LEAF) program at the Mapleton School District. We will be leading another three-week LEAF session in the spring. SWC staff and volunteers will maintain our involvement in our partners' education efforts in the Mapleton and Siuslaw School Districts. We will continue to provide educational presentations for schools and adult civic groups throughout the area.



Participants in one of the Siuslaw Watershed Exploration Camps

### Partners and Funders

These projects are made possible by the involvement and support of our partners, funders, members, area residents, and landowners. Partners and funders include: SWC members, the USFS, BLM, OWEB, ODFW, ODF, Rosboro, Davidson Industries, Roseburg Forest Products, Lane County, Weyerhaeuser, McKenzie River Trust, private landowners, SSWCD, LSWCD, Mapleton School District, Siuslaw School District, Oreogn DEQ, City of Florence, EPA, DHS, OSU, UO, and more. Thank you all!

Best Wishes for 2011,

Liz Vollmer-Buhl

SWC Coordinator/Executive Director & SWC Staff

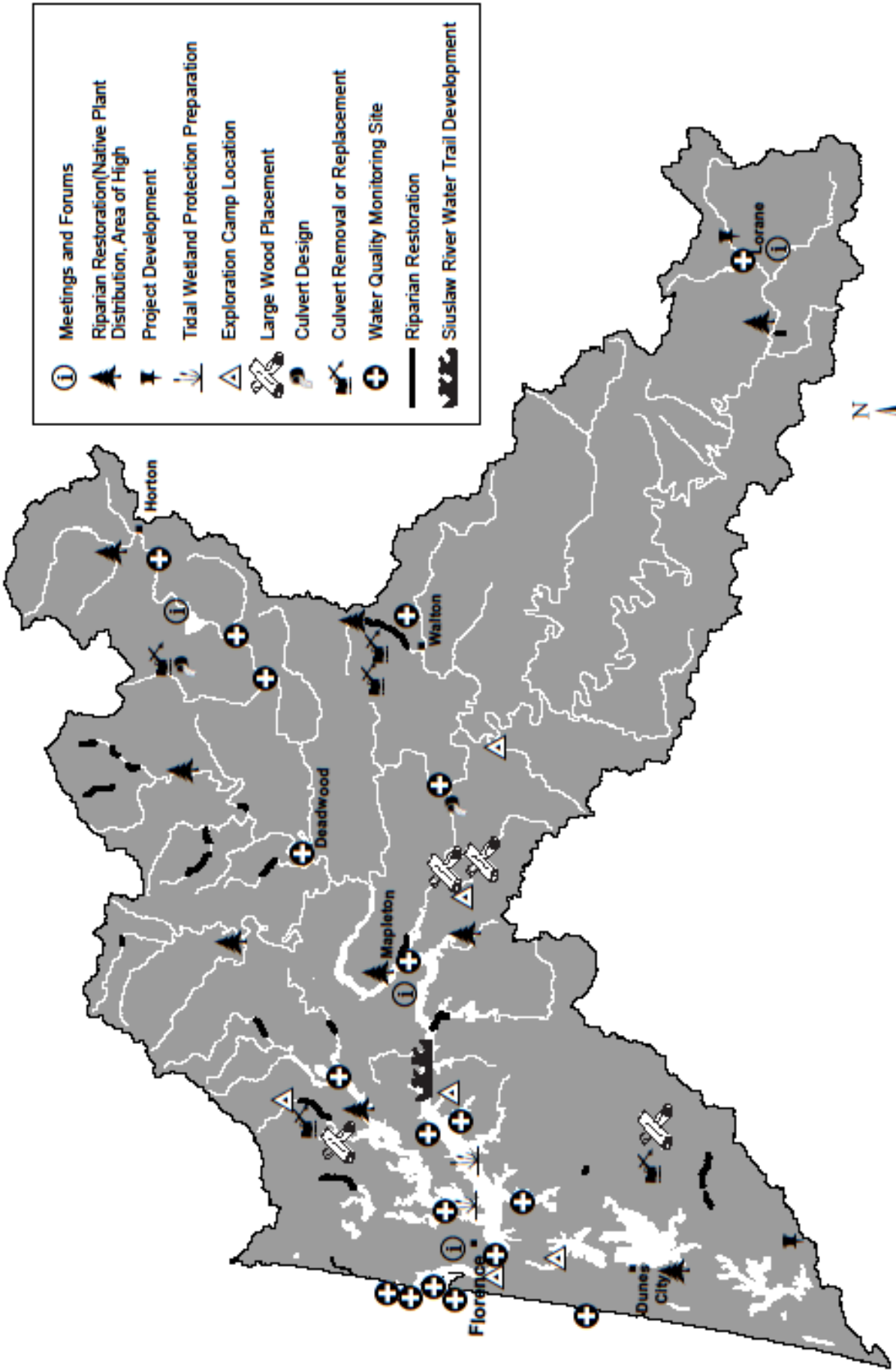


### New SWC Education Projects Manager

Mizu Burruss has joined the SWC as the Education Projects Manager. Mizu was raised in the Siuslaw watershed and, after an 11 year sabbatical, she is thrilled to be home again. Mizu graduated with a Bachelor of Science, majoring in geology, from Carleton College. She then moved to Seattle and worked in environmental restoration and environmental chemistry. Now, she is looking forward to the chance to share her knowledge and enthusiasm for life in the Siuslaw watershed with area youth and adults. Outside of work Mizu's three young daughters, possessed with inquiring minds and lots of energy, keep her busy. She also enjoys many forms of outdoor recreation, baking, and road-tripping.

# Siuslaw Watershed and Coastal Lakes

## SWC Accomplishments 2010



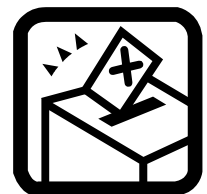
## 2011 Elections

Thank you to everyone who served on the Leadership Board and Executive Committee in 2010. Your service has benefited community members and the watershed. A special thank you to Steve Elliot, the 2010 SWC Executive Committee Chair. Steve has served for four consecutive terms as Chair and he's stepping down to spend more time on building a house. Thank you and best wishes! We will be thanking all current and departing Leadership Board and Executive Committee members at the January meeting.

Elections for 2011 will take place at the January 26 General Council Meeting. Please review the list of positions below; it contains 2010 representatives. An updated list of nominees for 2011 will be available in the Leadership Board section of the website ([www.siuslaw.org](http://www.siuslaw.org)). If you would like to run for a Leadership Board Representative position or would like to nominate someone for a position, please contact Liz at [coordinator@siuslaw.org](mailto:coordinator@siuslaw.org), or 541-268-3044. We will also be accepting nominations at the January 26 meeting and elections will follow during the meeting. Nominations for the Executive Committee are being accepted. Members of the Leadership Board may run for an Executive Committee position. If you have questions about the roles and responsibilities of Leadership Board Representatives or Executive Committee Members, please contact Liz.

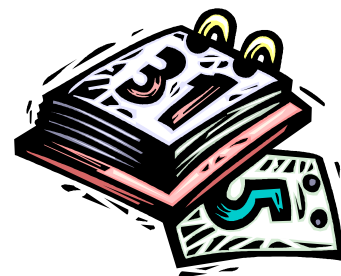
| No.                                               | POSITION                        | 2010 REPRESENTATIVES                        |
|---------------------------------------------------|---------------------------------|---------------------------------------------|
| <b>Area Representatives</b>                       |                                 |                                             |
| 1                                                 | North Fork Siuslaw              | Noland Huntington                           |
| 2                                                 | Lower Siuslaw                   | Hayden Sears                                |
| 3                                                 | Middle Siuslaw                  | Steve Elliot/Wesley Voth (Alt)              |
| 4                                                 | Upper Siuslaw (Incl. Wolf)      | Linda Corcoran and Others Pending (Shared)  |
| 5                                                 | Indian Creek                    | Barbara Beers                               |
| 6                                                 | Wildcat Creek                   | Dave Eisler                                 |
| 7                                                 | Deadwood Creek                  | Nancy Nichols/Bill Cirino (Alt)             |
| 8                                                 | Lake Creek                      | Gary Hale/Justin Workman (Alt)              |
| 9                                                 | No. Coastal Lakes & Siuslaw Bay | Gus Gates                                   |
| 10                                                | South Coastal Lakes             | Steve Hager                                 |
| 11                                                | At Large                        | Cindy Chambers/George or Alice Uriona (Alt) |
| <b>Interest Group Representatives - Elected</b>   |                                 |                                             |
| 12                                                | Academic/Scientific             | Tom Steinberg                               |
| 13                                                | Commercial Fishing              | Al Pazar                                    |
| 14                                                | Federal Land Management         | Paul Burns                                  |
| 15                                                | Public Education                | Jim Grano/Paula "Cricket" Crowder (Alt.)    |
| 16                                                | Small Woodlot                   | David Rankin                                |
| 17                                                | SWCD                            | Ray Kinney                                  |
| 18                                                | Agriculture/Ranching            | Johnny Sundstrom                            |
| 19                                                | Industrial Timber               | Mark Wall/Alt Pending                       |
| 20                                                | Environmental                   | Jan Wroncy/Eron King (Alt.)                 |
| 21                                                | State Government                | John Spangler/Link Smith (Alt.)             |
| 22                                                | Ecosystem Workforce             | Jeff Jones/Seth Mead (Alt.)                 |
| 23                                                | Resource Recreation             | Jeff Jackson                                |
| <b>Interest Group Representatives - Appointed</b> |                                 |                                             |
| 24                                                | Tribes CTCLUSI                  | Beth Tanner/John Schaefer (Alt.)            |
| 25                                                | Port of Siuslaw (Appointed)     | Sally Owens                                 |
| 26                                                | Lane Co. Government (Appointed) | Mary Moffat                                 |
| 27                                                | City of Florence (Appointed)    | Wendy Farley                                |

In order to vote for or serve on Leadership Board members you must be a current paid member of the SWC. You will find a membership form on page 7. If you have questions about your membership status, please contact Ginger at the SWC office. Thank you to everyone who has already paid their 2011 membership dues.



## Calendar of Events

- Wednesday, January 26: **SWC General Meeting.** 6:30—8:30 PM, Mapleton Grange, E. Mapleton Rd, Mapleton.
- Monday, February 1: **Siuslaw SWCD Board Meeting.** 6:30 PM, Contact SWCD for information (541-997-1272).
- Thursday, February 3: **SWC Technical Team.** 9:30—11:30 AM, Siuslaw Watershed Council office, Upper US Forest Service Compound, Mapleton.
- Thursday, February 3: **Siuslaw Stewardship Group.** 1—3 PM, Siuslaw Watershed Council office, Upper US Forest Service Compound, Mapleton.
- Wednesday, February 9: **SWC Executive Committee meeting.** 5:30 PM, Siuslaw Watershed Council office, Upper US Forest Service Compound, Mapleton.
- Saturday, February 12: **11th Annual SWC Native Plant Distribution.** Mapleton, Deadwood, Blachly, and Lorane. Contact Ginger at the SWC for more information.
- Wednesday, February 23: **SWC General Meeting** 6:30—8:30 PM, Mapleton Grange, E. Mapleton Rd, Mapleton.
- Monday, March 7: **Siuslaw SWCD Board Meeting.** 6:30 PM, Contact SWCD for information (541-997-1272).
- Thursday, March 3: **SWC Technical Team.** 9:30—11:30 AM, Siuslaw Watershed Council office, Upper US Forest Service Compound, Mapleton.
- Thursday, March 3: **Siuslaw Stewardship Group.** 1—3 PM, Siuslaw Watershed Council office, Upper US Forest Service Compound, Mapleton.
- Wednesday, March 9: **SWC Executive Committee meeting.** 5:30 PM, Siuslaw Watershed Council office, Upper US Forest Service Compound, Mapleton.

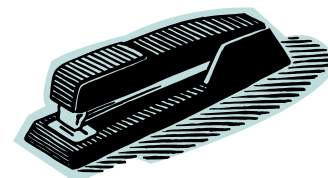


### Other events to consider:

- **Local Food Connections Conference 2011: Linking Local Farmers, Fishers, Ranchers and Food Buyers!** Monday, February 7, 2011 - 8:30am - 4:00pm. Now in its fifth year, this lively event brings together local food producers and buyers for business connections and to share information about building strong sustainable food networks. Details & registration at: [localfoodconnection.org](http://localfoodconnection.org).

## Announcements

- The SWC will be going through a facilitated Strategic Planning process in 2011. We will have several different opportunities to participate in the planning process throughout the spring and possibly early summer. Stay tuned to future mailings for more information.
- We are seeking the donation of new office supplies and related items, including a stapler, binder and paperclips, clipboards, postage stamps, tape, etc. If you are able to donate these items, please contact Ginger at [watershed@siuslaw.org](mailto:watershed@siuslaw.org). Thank you!
- Earn money for the SWC by signing up with eScrip. The Siuslaw Watershed Council has registered with eScrip. It is an easy way at no cost to you to generate donations to the SWC education programs when you make purchases from participating retailers. Visit [www.escrip.com](http://www.escrip.com) for information or to sign-up.



## Time and Mileage



Thank you to the many individuals who volunteer their time and efforts to the SWC. Please remember to document the time and mileage that you donate to the SWC on the Volunteer Time Logs (available at SWC meetings). Your recorded volunteer time and mileage can be used to “match” or leverage grant funding. You can fill out and turn in your logs at General Council Meetings. Thank You!



# ***Siuslaw Watershed Council***

**January General Meeting**

**6:30 pm, Wednesday, January 26, 2011**

**Mapleton Grange, E. Mapleton Rd, Mapleton.**



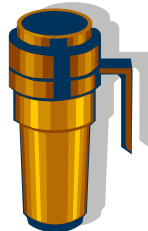
- 6:00pm — Doors open
- 6:30-6:40pm — Welcome and Introductions
- 6:40-6:50pm — Leadership Board Nominations and Selection; Executive Committee Nominations
- 6:50-7:15pm — Estuary Projects Updates I —Wilbur Mitigation Bank
- 7:15-7:25pm — Executive Committee Elections
- 7:25-7:40pm — Refreshments Break
- 7:40-8:00pm — Estuary Projects Updates II —Waite Ranch and North Fork Marsh
- 8:00-8:15pm — Reports
- 8:15-8:25pm — Open Mic
- 8:25-8:30pm — Announcements
- 8:30pm — Adjourn

*Schedule subject to change.*

Looking Ahead...  
The February General Council Meeting will be in Mapleton on February 23.  
The March General Council Meeting will be the Annual Ocean Issues Forum on March 30 in Florence.

## **BYOM**

To encourage reduction in waste, we are requesting that folks bring their own coffee mugs to the meeting.



## Thank You 2010 & 2011 Members and Donors

Mary Lee & Richard Anderson, Steve Andrus, Associated Services Corporation, John Bartlett, Thane Beers, Jim & Nancy Bellingham, Larry & Becky Benson, Hal Palmer & Tonia Blum, Joe Brewer, Karen Brodtkin, Dianne Burch, Billy & Kaki Burruss, Lisa & Ryan Chamberlain, Cindy Chambers, Dick & Karen Childs, Dennis & Janet Childers, Bill Cirino, Kevin Clark, Coast Road Construction, Marshall Cohen, Confederated Tribes of Coos, Linda Corcoran, Lower Umpqua and Siuslaw Indians, Barbara Dare, Robin Koontz & Marvin Denmark, Charley Dewberry, David & Beverly Dimon, Nancy Dresser, Jane & Rod Dunlop, Ellingson Family Ranch, Steve Elliot, Dave Eisler, Wendy Farley, Mike & Barb Francis, May & John Fleischer, Mark Freeman, Bob Friedman, Kathryn Torrence & Fuzzy Gates, Gus Gates, Richard & Corrine Gehlke, Eran & Jeanne Ginter, Bill & Cindy Grable, Larry Greenman, Bette & Ben Groesbeck, Jim Grano, Stephen Hager, Jan Wroncy & Gary Hale, Rob Handy, Donald Hayes, Al & Mary Herring, Shirley & Tony Humphreys, Noland Huntington, Yardenna Hurvitz, Benjamin Hustace, Jeff Jackson, Ken & Karen Jensen, Tom & Beth Kartrude, Justin Workman & Eron King, Ray Kinney, David Kokesh, David Larsell, Porter Leighton, Joanne & Larry Little, Robert London, Clarence & Nancy Lysdale, Claudia McKnight, Andy Marohl, Michael Mattick, David Mills, Jamie Mills, Don Modrall, David Webb & Mary Moffat, Michael Myers, Susie Navetta, Nancy Nichols, Barbara Norregaard, Maggie & George Oldershaw, Alice Orsini, Port of Siuslaw, Sky Pennel, David Rankin, Pat Reed, Greg Kennedy & Nancy Reed, Lori Robertson, Ray & Kathy Robinson, Michael Roe/Michael Roe Construction Inc., Tchanan Ross, Donald Landstrom & Zachary Ruhl, Julie Schaffner, Stephen & Ruth Shields, Rick Shepherd/Rosboro, Jonathan & Molly Stafford, Jason Stafford, Shad Stafford, Marvin Stainbrook, Lauren Hesse & Lucas Stang, Tom Steinberg, Kitty & Tim Stephens, George & Alice Uriona, Liz & Brian Vollmer-Buhl, Wesley Voth, Clifford & Nancy Walker, Roseburg FP, Donna Scurlock & Michael Weinstein, Ron & Cecelia Whitburn, Chuck Willer, Dave & Susan Williams, Sandra Young, Mary K Jaeger & Malcolm Wilson/Walton Hylomorphia, LLC, Leonora Kent & Michael Zachai. **Thank you!**

- If you made a donation or paid a membership in 2010 or 2011 and you don't see your name and you didn't request to remain anonymous please let us know so that we can announce it in the next newsletter. To those of you that asked to remain anonymous, thank you for your support for the SWC.
- If you haven't paid your membership for 2011, its not too late! **We are still accepting 2011 memberships and donations.**

### Siuslaw Watershed Council Membership Form

**Type of Membership:**

Landowner \_\_\_\_\_ Community Member \_\_\_\_\_ Industry \_\_\_\_\_

Government Agency: \_\_\_\_\_ Tribal: \_\_\_\_\_

**Name:** \_\_\_\_\_ **Today's Date:** \_\_\_\_\_

**Mailing Address:** \_\_\_\_\_

**Town:** \_\_\_\_\_ **State:** \_\_\_\_\_ **ZipCode:** \_\_\_\_\_ **Telephone:** \_\_\_\_\_

**E-mail:** \_\_\_\_\_  I would prefer to receive the newsletter electronically.

**Please choose and circle any of the following:**

- Tax-deductible membership enclosed (\$25 supporting, \$10 regular, \$0 students).
- Additional tax-deductible donation enclosed. Amount \$ \_\_\_\_\_
  - Direct to:  General Fund  Endowment  Research  Program (name): \_\_\_\_\_
  - Water Quality Monitoring  Native Plant Distribution
  - Siuslaw Water Trail  Outreach Events & Road Signs
  - Summer Watershed Camp  Dirk-Edmunds Gift Fund
  - Education and Outreach
- We like to recognize our donors. Please check here if you do not wish to be acknowledged in our newsletter.
- I am interested in volunteer opportunities with the Siuslaw Watershed Council.
- If you are interested in planned giving (remembering the SWC in your will) please contact the SWC office for more information. The SWC Tax Id Number is 93-1234456.

January 2011

**Thank You!**

