

Memorandum of Understanding

for the

Siuslaw Coho Partnership

Spring, 2018

Purpose and Partnership Vision

The Siuslaw Coho Partnership (SCP or Partnership) recognizes that partnerships and collaboration are becoming ever more critical for investment, as well as success of restoration projects in a complicated jurisdictional geography combined with a more holistic watershed approach to restoration. In 2018, the SCP will finish an in-depth planning process to identify restoration priorities throughout the Siuslaw and Coastal Lakes Watersheds referred to herein as The Plans. The Plans were created as part of the larger Coastal Coho Business Plan to promote coho recovery, ultimately with the goal of delisting the species under the Endangered Species Act (ESA). Beyond the Plans the partnership seeks to engage in efforts that are reflective of the SCP vision and supportive of the health of the Siuslaw Basin and Coastal Lakes watersheds.

Purpose

This MOU will provide an understanding for the partnership to implement Plans developed by the partnership, and will set forth guiding principles for the SCP to follow. This MOU's purpose is threefold:

1. Formalize the participation of members in the SCP, and define the roles of partnership members.
2. Set guiding principles in identifying and selecting restoration projects for implementation in collaboration with partnership members.
3. Provide a governance process and structure in which the SCP will make larger partnership decisions and actions.

The Siuslaw Coho Partnership Vision

As part of strategic planning process, the SCP created a vision statement whereby all members agreed on the overall vision and direction of the partnership into the future. The vision statement created within The Plans is as follows:

The Siuslaw Coho Partnership envisions a future where collaboration among residents drives thriving local communities that exist in balance with the region's highly productive Siuslaw River watershed. In addition to providing critical services that promote a high quality of life for local residents (like drinking water, flood storage, and nature-based recreation), the Siuslaw watershed will continue to generate some of the largest, most diverse coast coho (and other) salmon runs on the Oregon coast. Healthy salmon habitats – and the numerous plant and animal species that rely on them – will foster social and economic well-being in the Siuslaw Watershed and promote resilience to changing watershed conditions.

Benefits and Risks of Partnership Working

The SCP is affected by the same pressures and challenges of many other restoration-focused collaboratives across the Pacific Northwest. These include external issues such as budget restrictions,

government financial reform and deregulations, national budget restrictions and the political environment as well as internal issues such as jurisdictional boundaries, permitting, long standing differences in management practices or opinions. Partnerships can be an effective way of addressing some of these issues, which often cannot be tackled by any one member effectively. However, there are risks, as working across jurisdictional and organizational boundaries can increase complexity and ambiguity and reduce accountability.

Likely Benefits of Partnership Working

There are many benefits in working collaboratively to complete the vision and goals of the SCP, some of which include:

- Better coordination and integration in the implementation of restoration projects
- Flexibility and innovation, producing better restoration projects and implementing more credible solutions than those achievable by any single partnership member
- Improved communication and information-sharing
- More efficient and effective uses of resources to deliver value for investments in restoration, including access to skillsets and expertise of multiple membership organizations
- Greater capacity to plan and develop solutions, including pooling expertise, funding and resources

Likely Risks of Partnership Working

While there are recognized benefits of partnership working, there are inherent risks as well, recognizing that there are long term relationships built amongst members, as well as long standing differences. Some of the risks of partnership working include:

- Setting unrealistic goals and expectations
- Lack of awareness of the extent of financial and legal implications in restoration projects spanning multiple jurisdictional boundaries
- Financial and time commitments of partnership coordination and meetings
- Different or conflicting cultures, behaviors and institutional policies may lead to conflict or distrust
- Lack of clarity over partner expectations and responsibilities
- Inadequate governance and scrutiny over planning, decision-making and management of finance, risk and performance

Knowing these potential risks, the SCP will work to mitigate them as much as possible through this Agreement. Currently, many objectives and rigorous frameworks for selection of projects have already been set forth in The Plan and agreed to by membership organizations' representatives throughout the planning process, thereby mitigating some of these inherent partnership working risks.

Partners of The Siuslaw Coho Partnership

The Partners of the Siuslaw Coho Partnership are split into two categories, Core Implementers and the Technical Advisory Group. Throughout the creation of the Plans, many of these Partners have been attending regular planning meetings and have contributed significant amounts of skill, expertise and knowledge to the creation of the Plans and contributions to the projects listed therein. These two categories were found to be necessary, in order to reflect differences in the amount of time and funding that the Partners are able to contribute to the Partnership in the future, as well as the areas of expertise and anticipated future contributions. The group of core implementers will be expected to attend regular SCP meetings, and participate in project selection or other voting/consensus activities. The Technical Advisory Group will be able to offer information and feedback throughout the process, and will participate in voting or consensus activities through the quorum identified below.

The role of the core implementers is to implement projects collaboratively, including securing funding from diverse sources, contracting with qualified organizations to complete projects and to study effectiveness through post project monitoring and reporting. As part of that work, core implementers are expected to vote by consensus for projects to be put forward in grant proposals each year. The core implementers are expected to reach out to, and seek feedback from the technical advisory group members prior to seeking consensus on applying for grants/seeking funding for individual projects identified by the SCP.

Technical Advisory Group partners are encouraged to attend meetings of the SCP as they are able, but are not expected to be present at all meetings. Feedback and technical input from this group will be sought through primarily e-mail communications, as well as in-person meetings and phone communications as necessary. Core implementation partners acknowledge the capacity of technical advisory members and will work to ensure their time is used efficiently and feedback is sought on projects prior to grant proposal submissions.

It is the hope of the Siuslaw Coho Partnership to include additional Partners in the future. Especially important to our whole watershed restoration strategy is engaging private landowners, specifically those who live or work along streams in our watershed. In addition to smaller private landowners, the SCP would like to engage with private industrial timberland owners more in the future to work collaboratively with them to benefit watershed health.

Core Implementation Partners and Anticipated Contributions

Core Implementation Partner	Area of Expertise	Anticipated Contributions
Siuslaw Watershed Council (SWC)	The SWC is experienced foremost in collaboration among local partner agencies and a strong relationship to local landowners. SWC is focused on balancing interests from diverse stakeholder interest groups.	SWC will commit to facilitating and hosting partnership meetings at their office in Mapleton. The SWC will secure landowner agreements for projects and complete contracting while overseeing implementation and grant writing. SWC will utilize local stakeholders to develop additional future restoration projects.

United States Forest Service (USFS)	The Siuslaw National Forest is one of the main watershed restoration practitioners in the Siuslaw River and Coastal Lakes Basins. They provide expertise in fisheries, hydrology, botany, silviculture, geomorphology, recreation, and engineering. The Siuslaw National Forest is all about Restoration, Recreation, and Partnerships.	The Siuslaw National Forest has identified watersheds within the Siuslaw River and Coastal Lakes basins as focus watersheds with the intent to complete the essential restoration projects needed in those watersheds. The Forest will continue to work with the partnership to develop, acquire funding, and implement projects on and near Siuslaw National Forest managed lands for the foreseeable future.
Bureau of Land Management (BLM)	BLM has experience with planning, implementing and monitoring watershed restoration projects on BLM and neighboring lands.	BLM plans to assist with development of funding proposals, project review, monitoring, and implementation of restoration work on BLM and neighboring lands.
Siuslaw Soil and Water Conservation District (SSWCD)	The Siuslaw SWCD possesses extensive, unique local knowledge of the Siuslaw and Coastal Lakes Basins. Current personnel performed the rapid bio-assessments of the early 2000's, which were specifically designed to identify existing anchor habitats for coho salmon. Our professional experience is centered primarily in working with agricultural and forest landowners on a voluntary basis, to encourage and promote the responsible stewardship of our natural resources. We assist land managers in balancing ecologic and economic viability, to develop productive landscapes that provide cool clean water and high quality habitats.	The District plans to continue our heightened participation in the SCP. We commit to provide our resources, to assist in accelerating the implementation of the Siuslaw and Coastal Lakes SAP's. We expect the opportunity to provide input on all aspects of the SCP as needed, currently including but not limited to: project development and implementation, project review and sequencing, monitoring and data analysis, plan and grant writing, adaptive management, outreach, and general technical assistance support.
Confederated Tribes of Coos, Lower Umpqua and Siuslaw Indians (CTCLUSI)	Since time immemorial, the CTCLUSI have had an innate connection with the lands and waters of the Siuslaw Watershed for thousands of generations. This connection has shaped their culture as well as their roles as stewards. CTCLUSI is committed to providing Traditional Ecological Knowledge (TEK) expertise,	Access funding that may only be available to Tribes for projects within the Siuslaw Watershed. Provide staff to assist with project planning implementation/restoration activities, water quality and fish monitoring activities, outreach, and technical assistance. Providing

	integrating traditional resource management into stewardship activities, supporting, outreach, restoration work and water quality monitoring in the Basin.	plants for restoration that are of cultural significance as funding and resources allow.
Confederated Tribes of the Siletz Indians (CTSI)	The Confederated Tribes of Siletz Indians bring both their Traditional Ecological Knowledge as well as their experience in managing and restoring lands (to enhance aquatic and terrestrial habitats/communities) to this process.	The Confederated Tribes of Siletz Indians (CTSI) plan to contribute to this process through assistance with project development, design, funding, implementation and monitoring. In addition the CTSI plan to assist with technical review/support of project plans and results.
McKenzie River Trust (MRT)	MRT is a regional land trust that helps people protect and care for lands and rivers they cherish in Western Oregon. MRT has acquisition and real estate transaction experience that will be beneficial to partnership as well as a proven track record of working with numerous stakeholders to acquire, restore, enhance, and manage properties important to the community.	Work with partners to identify and acquire high priority properties where feasible. Apply for acquisition funding and partner with project funding requests for those properties.
Oregon Department of Fish and Wildlife (ODFW)	Aquatic and terrestrial species biology and habitat needs.	Spawning survey data, AQI data, planning, technical expertise and project review.

Technical Advisory Group and Anticipated Contributions

The Siuslaw Coho Partnership recognizes that not all of the Partners listed as core implementation Partners above will be implementing restoration projects directly, nor do they have the administrative capability of attending regular meetings. The Partners listed above represent the entities of the Partnership which will be actively implementing restoration projects on the ground, or implementing pieces of the plans pertaining to accessory roles which are vitally important such as stakeholder engagement and outreach efforts. However, the following organizations below are vitally important to the Partnership; and have been valued Partners in the development of current and future, and of restoration project designs throughout the past several decades in the Siuslaw and Coastal Lakes Watersheds. These SCP members will provide valuable feedback on projects throughout the basin and will help inform annual project selection and sequencing efforts.

	Area of Expertise	Anticipated Contributions
National Oceanic and Atmospheric Administration	Environmental compliance, coho habitat needs, GIS and other analytical support	Project review, permitting support, mapping, funding, and Netmap support

(NOAA)		
Natural Resource Conservation Service (NRCS)	Conservation Implementation on farms and forests, working with private landowners, supporting agriculture	Agriculture and conservation; project planning, funding, design and implementation

These organizations support the efforts of the SCP, and provide vital knowledge, assistance and data that enables the SCP to better understand and address watershed issues.

Addition of New Partnership Members

Additional agencies, organizations or tribes may, and are encouraged to be added to the Partnership provided the new Partner shares the Partnership's core purpose and vision, implemented through the collaborative model employed by the Partnership. Potential new Partners must submit a letter of interest to the Chair. All signatories will be notified of the proposed addition, and the Partners will consider the application at the next partnership meeting. Potential additional parties must demonstrate their anticipated contributions to the partnership, willingness and ability to operate within the consensus model, demonstrated ability to raise match funding for projects and are expected to be familiar with SCP activities, especially with the Plans and project sequencing/selection criteria.

Working Group Governance and Process

Meetings

The Partners will establish a meeting schedule consistent with the Partnership needs and grant cycle timelines. Meetings will proceed under the direction of the Chair with a written agenda, and summary minutes will follow each meeting as a record of Partnership decisions. At a minimum, the Partnership will meet quarterly and will accomplish the following tasks in those quarterly meetings:

- The winter meeting will be devoted to reviewing priority watersheds and individual priority projects for the grant cycles in the next year. The SCP should also recommend changes needed in the governance of the partnership in addition to any other needs of the Partnership.
- The spring meeting will decide through consensus described herein which restoration project will be showcased in a summer meeting and field tour in addition to any other needs of the partnership. The SCP will also identify volunteer needs and opportunities for collaboration with project implementation during the instream work window at this meeting. The SCP will discuss potential projects for grant writing for fall submissions and will coordinate submissions to primary funders among Partners.
- The summer meeting will be focused on a full-day field tour to a priority restoration project of the Partnership and will showcase lessons learned by implementers.
- The fall meeting will be focused on restoration project grant proposals; the SCP will provide feedback on grant proposals by Partner members and will discuss priority project submissions for the following year's fall and spring grant cycles.

Role of Chair

The Partnership will be administered by a Chair. The role of the Chair is to convene meetings, coordinate collection and sharing of information, and provide a known point of contact for the Core Implementer

Group. The Chair shall coordinate meeting scheduling, and will send out a written agenda two weeks prior to a meeting, as well as minutes from the prior meeting. Chair will keep a list of action items from meetings, as well as 'homework' assignments for partner members, keeping a list of what partners are responsible for, and will ensure accountability by following up with all partners.

The Chair is responsible for facilitation of the Partnership and ensuring that all partners' voices are heard throughout discussions. The Chair should provide alternative avenues of communication for partners, including following up through e-mail or individual phone calls to partner members to ensure adequate representation and comments were received from organizations in meetings and in partnership decisions.

Selection of Chair

The Chair will be selected by a consensus vote no later than December 1st of each year. Each signatory agency or organization will have a single vote. The Chair-elect will serve for the upcoming calendar year. In the event a selected Chair is unable to complete their term, the Partners will select a replacement as quickly as feasible.

Role of Vice Chair

The Vice Chair shall keep notes of all meetings, and will provide these meeting 'minutes' to the Chair no later than one week after a scheduled meeting. Vice Chair will be responsible for ensuring that all meeting participants are signed in to the meeting, and that comments from participants are captured. Vice Chair will coordinate with the Chair to ensure that questions raised at a meeting are answered, and that action items are completed by assigned partners before the decided deadline. If the Chair cannot attend a meeting, the Vice Chair will fulfill the responsibilities of the Chair at that meeting, and will designate another SCP member to take notes and fulfill the responsibilities of the Vice Chair at that meeting.

Selection of Vice Chair

The Vice Chair will be selected by a consensus vote no later than December 1st of each year. Each signatory agency or organization will have a single vote. The Vice Chair-elect will serve for the upcoming calendar year. In the event a selected Vice Chair is unable to complete their term, the Partners will select a replacement as quickly as feasible.

Communication

The SCP will communicate at regular meetings, it is expected that partners conduct themselves in a professional manner in these meetings and use respectful communication while discussing Partnership matters, or project selection/sequencing discussions. The Chair is expected to send out all meeting information to all SCP Partners no less than ten (10) days prior to a scheduled meeting. The Chair will make a best effort to ensure that all Partner organizations have attendance at the four annual meetings.

All meeting minutes will be recorded and sent to the Partnership, and the Partnership will be given opportunity to edit these minutes or provide additional feedback/discussion to topics discussed via e-mail communication to the SCP Chair who will coordinate with appropriate Partners as necessary. The Chair will also work to enable teleconferencing and file sharing technology/resources as appropriate to enable the most efficient collaboration possible amongst the Partnership.

Project summaries will be provided to the Chair at least ten business days before project selection/sequencing meetings throughout the year. The Chair will compile these project summaries and send them to the Partnership via e-mail and encourage SCP members to be familiar with the project proposals prior to selection/sequencing activities. The Chair will also be responsible for seeking input from the Technical Advisory Group about these projects, and will seek this feedback no less than ten business days before the meeting, in order to allow technical advisory group members enough time to review projects and seek additional information.

Annual Project Selection:

All Partners to this Agreement will participate in a collaborative process to update and maintain a comprehensive list for restoration projects focused within the priority 6th field HUC watersheds in the Plan.

Project Information Sharing

Each Partner is expected to identify and accurately represent its own projects to the Partnership for inclusion on the Partnership's formal list of projects for grant funding annually, and to request specific assistance of the Partnership, if any, in support of that project. Partners are expected to constructively solicit, receive and respond to feedback from other Partners and technical reviewers.

Process and Decision-Making

A project will be included on the formal list of Partnership projects for grant submissions upon consensus only. If, after constructive discussion and information-gathering, the Partners do not support a project due to concerns about feasibility or ecological benefits, then that project will be removed from the proposed list for the current year and reconsidered the following year after the project sponsor collects more information and addresses concerns raised over feasibility or ecological benefits based on partners' feedback.

Consensus Definition for the Siuslaw Coho Partnership

Consensus decision-making for the Partnership means that all partner members will either agree with, or will be able to 'live with' decisions made by the Partnership. Consensus decision making is a creative and dynamic way of reaching agreement between all members of a group. The Partnership is committed to finding solutions that members actively support, or at least can live with. This ensures that all opinions, ideas and concerns are taken thoroughly into account. Through listening closely to each other, the group aims to come up with proposals that work for everyone.

By definition, in consensus no decision is made against the will of an individual or a minority. If significant concerns remain unresolved, a proposal can be blocked and prevented from going ahead. This means that the whole group has to work hard at finding solutions that address everyone's concerns rather than ignoring or overruling minority opinions.

Quorum for Decision Making

A quorum must exist to make a Partnership decision and shall consist of one representative from each of the Siuslaw Coho Partnership core implementers, in addition to at least 2 representatives of the technical advisory group being present. Members are considered present if they are physically in attendance or are joining via conference phone or another technology. If a quorum is not met, the Chair will summarize all Partnership decision discussions and will seek input via e-mail from the Partnership to

adopt a decision after a meeting. If there is no feedback received from absent partner organizations after ten (10) business days, the Partnership will adopt the decision made at the meeting if no time extensions were requested.

A quorum must be present to amend the any plans, to select projects for grant proposal submissions, to vote for a Partnership Chair or Vice Chair, to approve/amend a Partnership budget, and to amend the Partnership's governance documents

Project Sequencing Guidance

In evaluating projects to put forward in each year's grant cycles, the Partners agree to generally apply the "Sequence Criteria" identified below. All projects within the Plans were identified as high priority projects, this sequencing criteria is meant to guide the Partnership in deciding which projects to fund in a given grant cycle. The SCP will seek to maximize the benefits of all organizations involved in the process and is dedicated to achieving the goals stated in the Plans as well as considering the capacity and organizational health of partners, therefore maintaining the strength of the partnership as a whole. The following criteria will be points of discussion for the Partnership when deciding which projects are ready to put forward in a given grant cycle:

- Consideration of project life cycle;
- Substantial scope and scale;
- Likely to have enduring benefits;
- Broad community support or encourages landowner participation;
- Listed as a high priority in additional scientific plans or assessments;
- Partner Capacity (FTE and Expertise);
- Cost effectiveness of project and;
- Environmental compliance and permitting requirements (NEPA, ARBO II, ESA, Cultural Resources, etc.)

Addition of New Projects

Over the course of this Agreement, it is expected that there may be unforeseen projects that meet the Siuslaw Framework criteria which emerge. Proponents of those projects may submit them for consideration to the Partnership, including a brief project summary. Proponents must also join the Core Implementers as outlined elsewhere in this Agreement.

Special Considerations for Acquisition and Protection Projects

The SCP recognizes the complex historical context of many of our Partners in relation to Acquisition and Protection projects. The Partnership seeks to maintain full transparency in regards to any potential acquisition and protection project identified in the Plans and further seeks to identify all actors that could potentially be involved in an acquisition or protection project on a project to project basis. The Partnership is committed to soliciting and being receptive to feedback from all partner members, especially tribal and land trust partner organizations regarding any potential acquisition and protection projects. These acquisition and protection projects are integral when implementing restoration projects that include the full spectrum of treatments and have an optimum potential for recovery and restoration. The Partnership is committed to reaching consensus when approaching acquisition and protection projects.

Objectives and Deliverables of the Siuslaw Coho Partnership

The SCP determined goals and objectives through the development of the Partnership's Plans. These objectives will guide the SCP in the development and implementation of restoration projects identified through the Partnership's project prioritization framework in the Plans and future plans. All partners are committed to the collective goals and objectives outlined within any SCP plans.

Project Information Sharing and Deliverables

Following completion of restoration projects, members agree to submit project accomplishments (deliverables) once yearly (by December 31st) to the Siuslaw Watershed Council, who will be responsible for creating an annual report for restoration projects completed by the Partnership. Members who completed a project will submit relevant GIS information, photos and a brief description of the project. This annual report will be used in leveraging additional funding for implementation of restoration projects in the basin. The report will be available for all members and distributed to the public.

General Provisions of Agreement

Partnership Commitment

Each partner is responsible for identifying, developing, implementing and monitoring their own projects and programs to ensure they meet the purpose of the Partnership and maintain high standards of accountability and effectiveness, as well as technical and ecological merit.

Partnership Liaison

Each partner agrees to identify a single representative to serve as Liaison to represent their organization during implementation of this Agreement. This representative may change periodically or based on the subject matter but it is the responsibility of the member organization to ensure this representative adequately represents the partner's perspective. Multiple liaisons may attend a meeting if deemed necessary and financially feasible to the partner.

Flexibility and Respectful Communication

To successfully implement the Objectives and Purpose of the Partnership, a practical, flexible, and efficient approach will be taken. The Partners agree to use open, respectful communication to find positive solutions to problems and conflicts. The Partners will act in good faith, which requires that the Partners represent the work of the Partnership consistently and positively in all forums.

Voluntary Participation

This Agreement reflects an entirely voluntary commitment between the Partners. This Agreement in no way obligates or restricts the activity of any Partner. Any Partner may withdraw from the Agreement upon notification to the Chair and other Partners.

Non-Obligatory

This Agreement is not a fiscal obligation document. Nothing in this Agreement obligates the Partners to enter into contracts or other funding instruments to carry out the purposes of this Agreement. No Partner shall have any right, power, or authority to create any obligation, expressed or implied on behalf of another Partner.

Non-Exclusive

This Agreement does not preclude the parties from establishing similar agreements and/or contracts with other individuals, corporations, agencies, and public or private organizations. The partners recognize the importance of continuing to cooperate and work with other partners in programs of mutual interest.

Duration and Modification

This agreement shall become effective upon the signature of all Core Implementation Partners and is effective through June 30, 2023. This agreement may be amended at any time by consensus of the Partners in writing. The Partners will review the entire Agreement at least every three years to ensure that its provisions best serve the purpose and objectives of the Partnership.

Administration and Fiscal Responsibility

All organizations are capable of managing restoration grants and will assume full responsibility for compliance and reporting on individual project awards. Funds that support partnership development (if any) will be managed through one organization (typically the Chair).

Cost of Partnership Participation

Absent any separate agreement among one or more SCP members, each member is solely responsible for its individual participation costs. Costs associated with Partnership coordination and implementation as defined in this MOU will be included within the Partnership budget each biennium.

No Liability

The term “Siuslaw Coho Partnership” describes a collaborative approach to restoration work, not a legal relationship. Each Partner agrees that it is solely responsible for its own acts and the results thereof, and that this agreement neither creates nor is intended to imply any agency, partnership, joint venture, or employee-employer, or similar legal relationship among the Partners. Under no circumstances shall this agreement be interpreted to make any Partner liable for the actions, debts or obligations of any other Partner nor shall this agreement be interpreted as a waiver of any legal defenses or as a waiver of sovereign immunity in any legal proceeding.

Confidentiality

No Partner is required to submit any information that violates the Partner’s confidentiality responsibilities. Additionally, no Partner shall use confidential information provided by another Partner for any purpose other than that agreed to by the Partner providing the information and with express permission to do so.

Public Disclosure

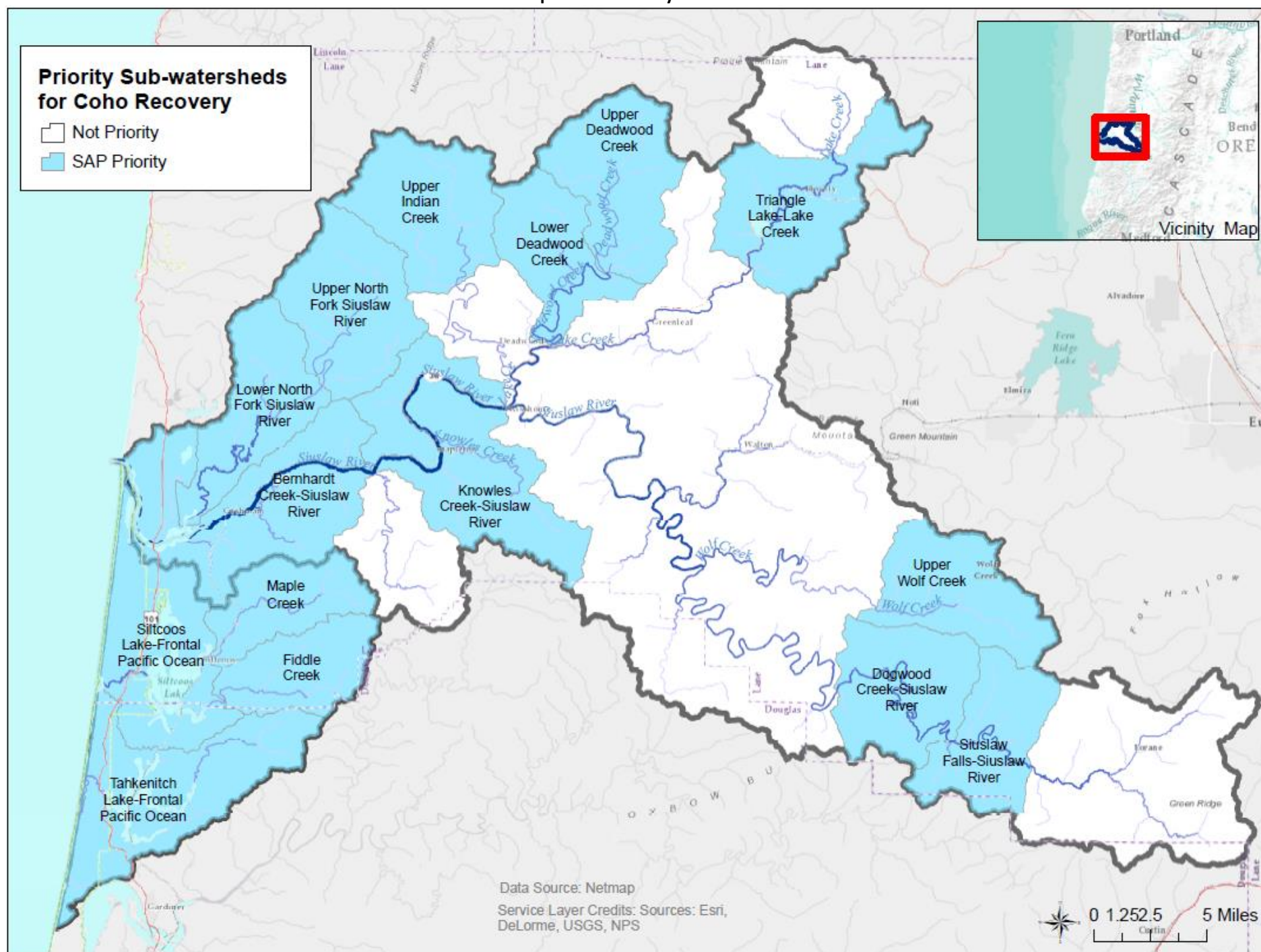
The Partners recognize that information shared with or furnished to public entities in the implementation of this Agreement may be subject to laws and regulations that may require such information to be made available to the public.

Representation of the Partnership

Partners are encouraged to communicate publicly about the purpose of the Partnership. In the event a Partner wishes to represent the Partnership in a way that is beyond the scope of this Agreement and/or Partnership-approved materials, the Partner shall first seek the consent of the other Partners. Although

all Partners are encouraged to speak publicly about the Partnership and their role in the Partnership, no Partner may represent another without the consent of the affected Partner(s).

Map of Priority Areas



Memorandum of Understanding
for the
Siuslaw Coho Partnership
Spring, 2018

The BLM Northwest Oregon District, Siuslaw Field Office hereby agrees to become a partner of the Siuslaw Coho Partnership and agrees to adhere to provisions stated herein. Furthermore, Northwest Oregon District, Siuslaw Field Office agrees with The Plans developed by the partnership and moves to adopt The Plans in prioritizing restoration projects throughout the priority areas. The number assigned to this MOU within the BLM is MOU BLM-ORN000-1809.

Organization Mission/Vision:

The Bureau of Land Management's mission is to sustain the health, diversity, and productivity of public lands for the use and enjoyment of present and future generations.

Partnership Vision:

The Siuslaw Coho Partnership envisions a future where collaboration among residents drives thriving local communities that exist in balance with the region's highly productive Siuslaw River watershed. In addition to providing critical services that promote a high quality of life for local residents (like drinking water, flood storage, and nature-based recreation), the Siuslaw watershed will continue to generate some of the largest, most diverse coast coho (and other) salmon runs on the Oregon coast. Healthy salmon habitats – and the numerous plant and animal species that rely on them – will foster social and economic well-being in the Siuslaw Watershed and promote resilience to changing watershed conditions.

BLM Northwest Oregon District
Name of Organization/Agency

6/7/18
Date

Jose Linares
Name of Authorized Signatory

Jose L. Linares
Signature

Northwest Oregon District Manager
Title of Authorized Signatory

Memorandum of Understanding
for the
Siuslaw Coho Partnership
Spring, 2018

McKenzie River Trust hereby agrees to become a partner of the Siuslaw Coho Partnership and agrees to adhere to provisions stated herein. Furthermore, McKenzie River Trust, agrees with The Plans developed by the partnership and moves to adopt The Plans in prioritizing restoration projects throughout the priority areas.

Organization Mission/Vision:

McKenzie River Trust helps people protect and care for the lands and rivers they cherish in western Oregon.

Clean, free-flowing rivers. Plentiful salmon runs. Vibrant farms and forests that provide livelihoods and habitat. From the Cascade Mountains to the Pacific Ocean, we envision a future in which conservation lands are at the core of community efforts to sustain clean water, abundant fish and wildlife, and diverse natural resource economies in western Oregon.

Partnership Vision:

The Siuslaw Coho Partnership envisions a future where collaboration among residents drives thriving local communities that exist in balance with the region's highly productive Siuslaw River watershed. In addition to providing critical services that promote a high quality of life for local residents (like drinking water, flood storage, and nature-based recreation), the Siuslaw watershed will continue to generate some of the largest, most diverse coast coho (and other) salmon runs on the Oregon coast. Healthy salmon habitats – and the numerous plant and animal species that rely on them – will foster social and economic well-being in the Siuslaw Watershed and promote resilience to changing watershed conditions.

McKenzie River Trust

Name of Organization/Agency

Executive Director


Title of Authorized Signatory

Joe Moll

Name of Authorized Signatory

June 5 2018

Date



Signature

Siuslaw Coho Partnership
Spring 2018

Memorandum of Understanding

for the

Siuslaw Coho Partnership

Spring, 2018

The Oregon Coast Branch of the Oregon Washington Coastal Office, West Coast Region, NOAA Fisheries (hereafter referred to as 'the Branch') hereby agrees to become a partner of the Siuslaw Coho Partnership and agrees to adhere to provisions stated herein. Furthermore, the Branch, agrees with The Plans developed by the partnership and moves to adopt The Plans in prioritizing restoration projects throughout the priority areas.

Organization Mission/Vision:

NOAA Fisheries is responsible for the stewardship of the nation's ocean resources and their habitat. We provide vital services for the nation: productive and sustainable fisheries, safe sources of seafood, the recovery and conservation of protected resources, and healthy ecosystems – all backed by sound science and an ecosystem-based approach to management.

Our work is guided by two core mandates – to ensure the productivity and sustainability of fisheries and fishing communities through science-based decision-making and compliance with regulations, and to recover and conserve protected resources including marine mammals, sea turtles, and fish.

Partnership Vision:

The Siuslaw Coho Partnership envisions a future where collaboration among residents drives thriving local communities that exist in balance with the region's highly productive Siuslaw River watershed. In addition to providing critical services that promote a high quality of life for local residents (like drinking water, flood storage, and nature-based recreation), the Siuslaw watershed will continue to generate some of the largest, most diverse coast coho (and other) salmon runs on the Oregon coast. Healthy salmon habitats – and the numerous plant and animal species that rely on them – will foster social and economic well-being in the Siuslaw Watershed and promote resilience to changing watershed conditions.

Oregon Coast Branch, NOAA Fisheries
Name of Organization/Agency

Branch Chief
Title of Authorized Signatory

Ken Phippen
Name of Authorized Signatory

June 6, 2018
Date



Signature

Siuslaw Coho Partnership
Spring 2018

Memorandum of Understanding
for the
Siuslaw Coho Partnership
Spring, 2018

The Confederated Tribes of Siletz Indians hereby agrees to become a partner of the Siuslaw Coho Partnership and agrees to adhere to provisions stated herein. Furthermore, *the Confederated Tribes of Siletz Indians* agrees with The Plans developed by the partnership and moves to adopt The Plans in prioritizing restoration projects throughout the priority areas.

Organization Mission/Vision:

It is the mission of the Siletz Tribal Natural Resources Department to care for, protect, enhance and provide for the wise use of all of the Tribe's natural resources in a manner which will ensure that all generations to come will benefit from these resources. This philosophy applies to all lands to which the Tribe is historically tied, including its ancient, aboriginal, ancestral lands, its Coast Reservation, and its current and future land holdings.

Partnership Vision:

The Siuslaw Coho Partnership envisions a future where collaboration among residents drives thriving local communities that exist in balance with the region's highly productive Siuslaw River watershed. In addition to providing critical services that promote a high quality of life for local residents (like drinking water, flood storage, and nature-based recreation), the Siuslaw watershed will continue to generate some of the largest, most diverse coast coho (and other) salmon runs on the Oregon coast. Healthy salmon habitats – and the numerous plant and animal species that rely on them – will foster social and economic well-being in the Siuslaw Watershed and promote resilience to changing watershed conditions.

Confederated Tribes of Siletz Indians

Name of Organization/Agency

Brenda Bremner

Name of Authorized Signatory

General Manager

Title of Authorized Signatory

5/21/18

Date

[Signature]
Signature

Memorandum of Understanding
for the
Siuslaw Coho Partnership
Spring, 2018

The USDA Forest Service, Siuslaw National Forest hereby agrees to become a partner of the Siuslaw Coho Partnership and agrees to adhere to provisions stated herein. Furthermore, the Siuslaw National Forest, agrees with The Plans developed by the partnership and moves to adopt The Plans in prioritizing restoration projects throughout the priority areas.

Organization Mission/Vison:

The mission of the Forest Service is to sustain the health, diversity, and productivity of the Nation's forests and grasslands to meet the needs of present and future generations.

Partnership Vision:

The Siuslaw Coho Partnership envisions a future where collaboration among residents drives thriving local communities that exist in balance with the region's highly productive Siuslaw River watershed. In addition to providing critical services that promote a high quality of life for local residents (like drinking water, flood storage, and nature-based recreation), the Siuslaw watershed will continue to generate some of the largest, most diverse coast coho (and other) salmon runs on the Oregon coast. Healthy salmon habitats – and the numerous plant and animal species that rely on them – will foster social and economic well-being in the Siuslaw Watershed and promote resilience to changing watershed conditions.

Siuslaw National Forest, Central Coast Ranger
District-Oregon Dunes National Recreation Area

Name of Organization/Agency

Michele H. Jones
Name of Authorized Signatory

District Ranger

Title of Authorized Signatory

05/07/2018
Date


Signature

Siuslaw Coho Partnership
Spring 2018

Memorandum of Understanding
for the
Siuslaw Coho Partnership
Spring, 2018

The Oregon Department of Fish and Wildlife (ODFW) hereby agrees to become a partner of the Siuslaw Coho Partnership and agrees to adhere to provisions stated herein. Furthermore, ODFW, agrees with The Plans developed by the partnership and moves to adopt The Plans in prioritizing restoration projects throughout the priority areas.

Organization Mission/Vision:

The mission of the Oregon Department of Fish and Wildlife is to protect and enhance Oregon's fish and wildlife and their habitats for use and enjoyment by present and future generations.

Partnership Vision:

The Siuslaw Coho Partnership envisions a future where collaboration among residents drives thriving local communities that exist in balance with the region's highly productive Siuslaw River watershed. In addition to providing critical services that promote a high quality of life for local residents (like drinking water, flood storage, and nature-based recreation), the Siuslaw watershed will continue to generate some of the largest, most diverse coast coho (and other) salmon runs on the Oregon coast. Healthy salmon habitats – and the numerous plant and animal species that rely on them – will foster social and economic well-being in the Siuslaw Watershed and promote resilience to changing watershed conditions.

Oregon Department of Fish and Wildlife

Name of Organization/Agency

Mid-Coast District Fish Biologist

Title of Authorized Signatory

John Spangler

Name of Authorized Signatory

6/11/18

Date



Signature

Siuslaw Coho Partnership
Spring 2018

Memorandum of Understanding

for the

Siuslaw Coho Partnership

Spring, 2018

The Siuslaw Watershed Council hereby agrees to become a partner of the Siuslaw Coho Partnership and agrees to adhere to provisions stated herein. Furthermore, *The Siuslaw Watershed Council*, agrees with The Plans developed by the partnership and moves to adopt The Plans in prioritizing restoration projects throughout the priority areas.

Organization Mission/Vision:

The SWC supports sound economic, social, and environmental uses of natural and human resources in the Siuslaw River Basin. The Council encourages cooperation among public and private entities to promote awareness and understanding of watershed functions by adopting and implementing a total watershed approach to natural resource management and production.

Partnership Vision:

The Siuslaw Coho Partnership envisions a future where collaboration among residents drives thriving local communities that exist in balance with the region's highly productive Siuslaw River watershed. In addition to providing critical services that promote a high quality of life for local residents (like drinking water, flood storage, and nature-based recreation), the Siuslaw watershed will continue to generate some of the largest, most diverse coast coho (and other) salmon runs on the Oregon coast. Healthy salmon habitats – and the numerous plant and animal species that rely on them – will foster social and economic well-being in the Siuslaw Watershed and promote resilience to changing watershed conditions.

Siuslaw Watershed Council

Name of Organization/Agency

Board of Directors President

Title of Authorized Signatory

David Eisler

Name of Authorized Signatory

05/14/18

Date



Signature

Siuslaw Coho Partnership
Spring 2018

Memorandum of Understanding

for the

Siuslaw Coho Partnership

Spring, 2018

The Confederated Tribes of the Coos, Lower Umpqua and Siuslaw Indians hereby agrees to become a partner of the Siuslaw Coho Partnership and agrees to adhere to provisions stated herein. Furthermore, The Confederated Tribes of the Coos, Lower Umpqua and Siuslaw Indians, agrees with The Plans developed by the partnership and moves to adopt The Plans in prioritizing restoration projects throughout the priority areas.

Organization Mission/Vision:

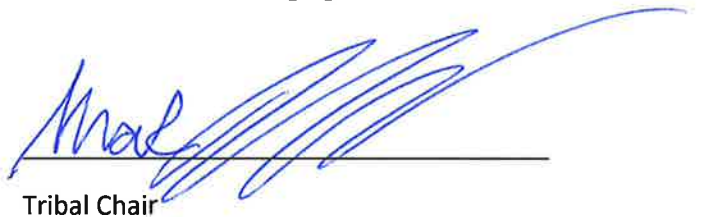
The mission of the CTCLUSI Department of Natural Resources is to research, monitor, assess, manage, use, conserve, protect, and restore the natural resources of the Confederated Tribes' Ancestral Territory, and to protect Tribal archaeological resources.

Partnership Vision:

The Siuslaw Coho Partnership envisions a future where collaboration among residents drives thriving local communities that exist in balance with the region's highly productive Siuslaw River watershed. In addition to providing critical services that promote a high quality of life for local residents (like drinking water, flood storage, and nature-based recreation), the Siuslaw watershed will continue to generate some of the largest, most diverse coast coho (and other) salmon runs on the Oregon coast. Healthy salmon habitats – and the numerous plant and animal species that rely on them – will foster social and economic well-being in the Siuslaw Watershed and promote resilience to changing watershed conditions.

The Confederated Tribes of the Coos, Lower
Umpqua and Siuslaw Indians

Mark Ingersoll



Tribal Chair



Date

Siuslaw Coho Partnership
Spring 2018

Memorandum of Understanding
for the
Siuslaw Coho Partnership
Spring, 2018

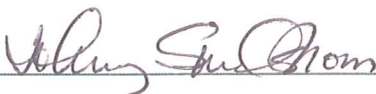
The Siuslaw Soil and Water Conservation District (Siuslaw SWCD) hereby agrees to become a partner of the Siuslaw Coho Partnership and agrees to adhere to provisions stated herein. Furthermore, the Siuslaw SWCD agrees with The Plans developed by the partnership and moves to adopt The Plans in prioritizing restoration projects throughout the priority areas.

Organization Mission:

The mission of the Siuslaw Soil and Water Conservation District is to encourage and promote the responsible stewardship of natural resources through the coordination and delivery of local, state and federal conservation programs, as well as through local natural resources education activities.

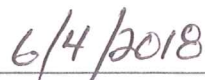
Partnership Vision:

The Siuslaw Coho Partnership envisions a future where collaboration among residents drives thriving local communities that exist in balance with the region's highly productive Siuslaw River watershed. In addition to providing critical services that promote a high quality of life for local residents (like drinking water, flood storage, and nature-based recreation), the Siuslaw watershed will continue to generate some of the largest, most diverse coast coho (and other) salmon runs on the Oregon coast. Healthy salmon habitats – and the numerous plant and animal species that rely on them – will foster social and economic well-being in the Siuslaw Watershed and promote resilience to changing watershed conditions.


Siuslaw SWCD

Johnny Sundstrom


District Chair


Date

Signature