

SIU SLAW WATERSHED COUNCIL NEWS

MARCH 2004

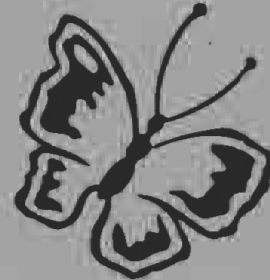
www.siuslaw.org

watershed@siuslaw.org

P.O. Box 422 • Mapleton, Oregon 97453 • 541-268-3044

• Community • Economy • Environment

Message from the Coordinator



The Siuslaw Watershed Council Executive Committee and I ushered in the first day of spring by spending our annual retreat at Woahink Lake. The day was spent working together on the Strategic Plan, a work yet in progress that will help identify goals, obstacles, and directions to take over the next 10 years. It was an opportunity to remove ourselves from both the past successes of restoration endeavors and the daily management of ongoing projects and instead envision the challenges ahead. Despite the ample work that beckons our heed, the council leadership is enthused, stalwart, and optimistic about the health of the watershed, community, and council for the future.

This fortitude is especially important in the wake of a major set back to the Stewardship Group this past month. As the group, after over a year-and-a-half of diligent work, awaits the first round of project proposals vying for Stewardship Grants funded through the Forest Service, news has come down that agency heads in Washington, DC decided that they are opposed to the use of the funds for anything but strictly stream or forest restoration work. This means that the vision the Stewardship Group had for promoting natural resource economic opportunities in the watershed must be set aside for now. Likewise, crucially important endeavors like monitoring and research to guide effective restoration strategies are on hold at this time. Many participants, albeit frustrated, have reoriented their project designs to focus on restoration activities that may receive funding to ensure that the community still benefits from this recycling of dollars back into the watershed.

Meanwhile, I too am wringing some sugar from the bitter rind rationed to me on my commute over Highway 126. The Chickahominy Creek bridges improvement project has created a traffic bottleneck. On some days, delays of 20 minutes or more have developed a seemingly endless concatenation of log trucks, trailers hauling dune buggies, four-wheel drive rigs, sports coupes, beater sedans, and the occasional visibly frustrated latte drinker in a gleaming luxury SUV. As unpleasant as the prospect of traffic through the Coast Range may be, it does remind me about who the daily users of the watershed are. And stopped; I have the opportunity to look up into the forests and cleared timber tracts and down into the creeks and get that much more familiar with the landscape. Stuck there, halfway through my usually unimpeded voyage, I have the sense of a Siuslaw fish reaching that barrier that prevents it from moving onward.

In mid-March, at the Whittaker Creek fish trap, I witnessed steelhead that had made such a journey. At the invite of STEP volunteer Tom Petersen, I looked on as he hosted teacher Kyle Knipe's seventh-grade charges and helped direct the collection of the fish and their eggs. This trap is a purposeful mechanism for keeping the fish from moving upstream. Elsewhere in the watershed, culverts and other structures installed without fish passage in mind preclude salmon and steelhead from entering potential upstream habitats.



Continued on page 2



The Siuslaw Watershed Council
is a

community supported
501c3 non-profit
group and there are
many ways that YOU
can help and partici-
pate as a volunteer.

Volunteers are
needed to help at our
office in Mapleton with
general office activi-
ties, with set-up and
take-down at our
regular meetings, and
with special event ac-
tivities. Contact the
Council office for
volunteer
opportunities,
541-268-3044.

Upcoming Speakers

March 31—

Johan Hogervorst,
US Forest Service
Hydrologist, will give
a presentation on the
Karnowsky Creek
Restoration Project.
He will also announce
a date for a commu-
nity tour of the pro-
ject.



Correctly Attributed

In the February Newsletter,
we printed an excerpt
about the Armenian black-
berry (formerly identified as
Himalayan blackberry).
This piece was a part of a
longer article written by
Tom Titus from the Univer-
sity of Oregon. The full arti-
cle was published in
"Nature Trails", the news-
letter of the Eugene Natu-
ral History Society.

Save the Dates

June 18 and 19...

...for the FREE Household Haz-
ardous Waste Disposal Event
in Florence. Save up your haz-
ardous disposables and get rid
of them in a safe (and free)
way!

More information in future SWC
newsletters or call Wendy Far-
ley at 997-8237.

...Message from the Coordinator *Continued from page 1*

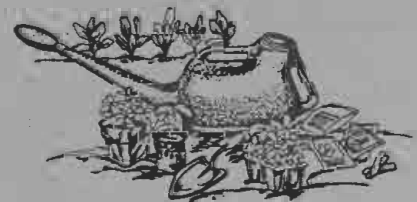
The council is wrapping up an assessment of fish passage problems throughout the watershed this spring. From the estuary to the high reaches of the basin, habitat areas have been prioritized and numerous culverts and tide gates have been reviewed for fish blockage. We will engineer the re-design of 19 such structures by spring's end. Currently, we have already identified five culverts for which we will be applying for funds to cover construction costs of the re-designs in 2005. The first five selected by the Technical Team are well-distributed in the watershed, notwithstanding that four of the five are pairs in two creek drainages. One such pair is in the Esmond Creek sub-watershed in the south-central Siuslaw Watershed. The other pair is in the Knapp Creek sub-watershed in the eastern end of the watershed. The fifth culvert to be proposed for funding is on Elk Creek in the Indian Creek sub-watershed.

To help secure the desired funding for this project, I attended an OWEB grant writing workshop this month. We will be submitting our grant proposals to OWEB for all five of these first-selected culvert replacements. Additionally, I had the opportunity to attend a statewide conference of watershed councils in Wilsonville during February. There I met council coordinators and members from throughout the state and gained some valuable insights and contacts for future work. Fortuitously, there I attended a session by NOAA Fisheries staffer Rosemary Furfey, whose presentation on coho salmon recovery to the Siuslaw Watershed Council that same week I had missed due to illness.

In all, it is shaping up to be a great spring. I look forward to meeting with many of you over the coming months.

Cordially,

Todd Miller





***Get ready for the 2nd annual
Scotch Broom Round Up!***

Saturday, April 17, 2004

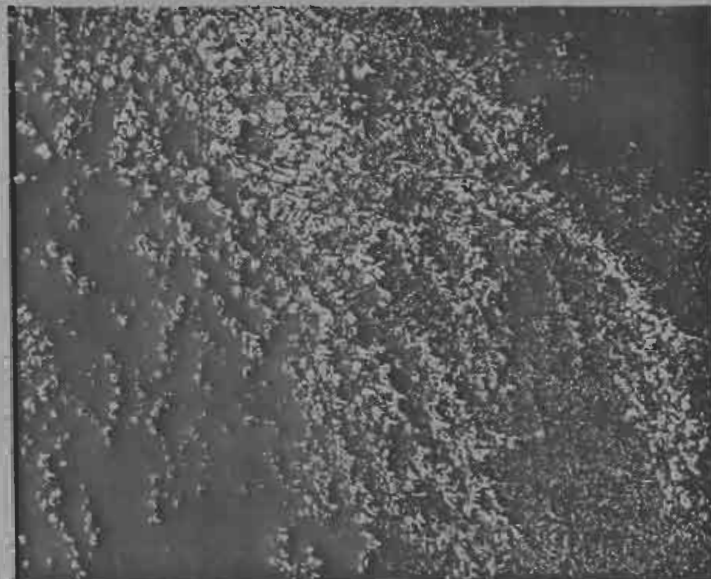
8:00 am – 1:00 pm

Siuslaw High School Parking Lot

Scotch broom is an invasive weed that aggressively spreads at the expense of young trees, pasture grasses, and native plants. Spring is the best time to remove this noxious weed and the free Florence collection event provides residents with an opportunity to easily dispose of scotch broom in a manner that prevents it from spreading.

**How to participate in
the round up:**

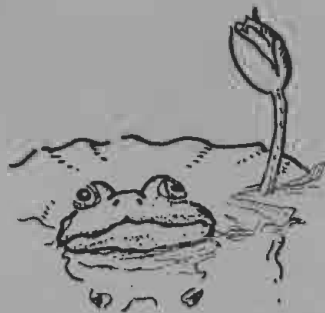
- Identify plants by their dark green, broom-like branches and bright yellow flowers.
- Pull up the entire plant- including the roots.
- Bring gathered plants to the collection site for safe disposal.
- Other weeds will be accepted.



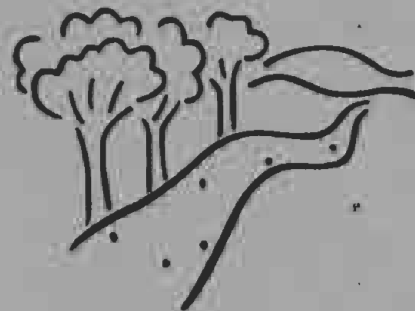
Collection will take place at the
Siuslaw High School Parking Lot
2975 Oak Street Florence

Questions?
Call the Community
Development Department at
541-997-8237





**Siuslaw Watershed Council
General Meeting Agenda
March 31, 2004
Mapleton Grange Hall
6:30 p.m.**



6:30-6:40 **Welcome and Introductions**

6:40-7:25 **Presentation:** Johan Hogervorst, US Forest Service Hydrologist, Kamowsky Creek Restoration Project. He will also announce a date for a community tour of the project.

7:25-7:40 **Break for refreshments and socializing**

7:40-8:00 **Reports and Updates**

8:00-8:10 **Small-Diameter Wood Report**

8:10-8:25 **Open Mic (3-5 speakers, 3-5 minutes each)**

8:25-8:30 **Announcements**

8:30 **Adjourn**

* * * * *
* **Monthly Raffle** *
* To help raise funds for the *
* Council, we are holding a *
* raffle of donated items at *
* each General Council meet- *
* ing. Tickets are a suggested *
* donation of \$1 each or 6 for *
* \$5. The winner will get to *
* choose from available *
* items. *
* * * * *



Siuslaw Watershed Council Membership Form

Type of Membership:

Landowner _____ Community Member _____ Industry _____

Government Agency: _____ Tribal: _____

Name: _____ **Today's Date:** _____

Address: _____

Telephone: _____ **E-mail:** _____

Please choose any of the following:

- Tax-deductible membership enclosed (\$10 regular, \$0 students).
- Additional tax-deductible donation enclosed. Amount \$ _____
- I am interested in volunteer opportunities with the Siuslaw Watershed Council

Treasurer's Report

Nancy Nichols, Council Treasurer

February 2004

Beginning Cash \$32,017.77

	FEBRUARY	YEAR TO DATE
INCOME		
Dues	\$85.00	\$680.00
Federal Grants		
State Grants	\$3,960.00	\$9,551.00
Private Grants	\$1,086.15	\$1,086.15
Interest	\$19.91	\$47.13
Donations & Misc.	\$52.00	\$337.00
Administrative Funds	\$450.00	\$832.08
Reimbursements		\$567.63
Other		
TOTAL INCOME	\$5,653.06	\$13,100.99
EXPENSES		
Grant Expenses	\$8,424.41	\$13,583.61
Other	\$181.01	\$181.01
TOTAL EXPENSES	\$8,605.42	\$13,764.62



Ending Cash \$29,065.41*

*\$14,782.30 general,
\$14,283.11 grants

Schedule of Events

March 31- Siuslaw Watershed Council General Meeting: 6:30 pm, Mapleton Grange, E. Mapleton Road.

April 1- SWC Technical Team Meeting: 9:30 am, Upper Compound, Mapleton.

April 8- USFS Stewardship Community Monitoring Team Meeting, 1:00-3:00 pm, SWC office.

April 12- Siuslaw Soil and Water Conservation District Meeting: 7:00 pm, Port of Siuslaw 1499 Bay Street, Florence.

April 14- SWC Executive Committee Meeting: 5:30 pm., Upper Compound, Mapleton.

April 28- Siuslaw Watershed Council General Meeting: 6:30 pm, Mapleton Grange, E. Mapleton Road.

Volunteer Estuary Monitoring Program: call 268-3044, for future meeting times and places

Helping plants survive animals

If you are working to establish a riparian corridor along your creek, lake or river, check to make sure your plants are getting a good start. Native animals eat native plants. With a bit of help your riparian plantings can get large enough to accept a few nibbles.

Young trees without thick bark can be easily killed by mice and voles that girdle the young trees. This is particularly bad in grassy areas where they find good cover from predators. If you planted trees in grassy areas, check for signs of small rodents girdling them. If you see any signs of bark nibbling, try removing grass from a wider area around the trees and wrapping foil around the base of each tree.

If your problem is deer or elk, the plastic mesh tubes help a lot. The Council has some of these available. If the beaver are the ones eating the trees, the plastic tubes don't help much. For beaver problems, the Council has wire cages to protect the trees most at risk. Usually that is the cedar trees closest to the bank. Call ahead (268-3044) to make sure we have the material you need and that someone will be in the office to give them to you.

Siuslaw Watershed Council Mission Statement

The Siuslaw Watershed Council supports sound economic, social and environmental uses of natural and human resources in the Siuslaw River Basin. The Council encourages cooperation among public and private watershed entities to promote awareness and understanding of watershed functions by adopting and implementing a total watershed approach to natural resource management and production.

• Community • Economy • Environment

S I U S L A W

WATERSHED COUNCIL



P.O. Box 422 • Mapleton, Oregon 97453 • 541-268-3044

www.siuslaw.org

watershed@siuslaw.org

Siuslaw SWCD
PO Box 2768
Florence OR 97439

What's Happening in Your Watershed?

37439+0163 2B

