

Message from the Coordinator...

Summer Watershed Workshops Coming to a Location Near You!

How does a stream restoration project get planned? What do livestock, culverts, and large woody debris have in common? What does a restored stream channel look like? How is it different? How do the plants on the stream bank and winter storm events relate to the number of salmon in the streams? Do we notice other wildlife besides fish after stream restoration? What are noxious weeds? Don't non-native plants provide food and cover for wildlife? Don't invasive plants also shade the stream? What can I do to help enhance the watershed?

These are just a sampling of the questions that Siuslaw Watershed community members of all ages will get to explore during our summer Saturday workshop series. For three Saturday mornings this summer on alternating weekends starting July 14, SWC will host fun, guided field tours in three different areas of the watershed. These workshops will combine informative discussions, hands on learning opportunities, and pleasant opportunities to get out and see some very different areas of the Siuslaw Watershed.

We are planning the workshops to be fun for the whole family – kids will get a chance to get out and explore new and neat things, and adults will have the chance to learn new things about the watershed, take home new skills, and get connected with useful resources for further information and assistance. Please come prepared for these half day adventures as you would for any outdoor activity – bring hats and sunblock, water and snacks, and anything else you think you will want.

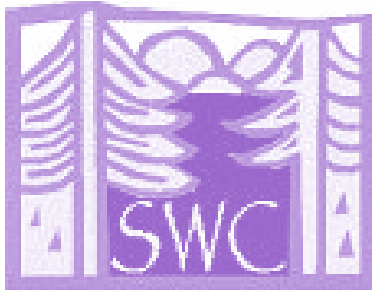
The details of each of the workshops are described below. Some of the plans remain tentative at this date – please check our Web site for updates or call our office to confirm meeting spots.

Series Opener: Lorane Watershed Workshop – Noxious Weed Demonstration and Woodland Restoration Tour, Saturday, July 14, 8:00 am – 11:00 am (Site 1) and 11:30 am to 1:00 pm (Site 2).

Pending details to be confirmed with the host landowner, we will meet at a property in Gowdyville, south of Lorane. Plan to meet at the intersection of Territorial Highway and Gowdyville Road at 8:00 am to caravan to the location. We will hear from invasive species and noxious weed specialists about recognizing and identifying problem species, learn why they pose a problem to our land management and watershed function, and what methods of control and eradication are recommended. We will take a look at some of the challenges that noxious weeds present and get a hands-on learning opportunity on the do's and don'ts of weed removal.

At 11:00 am we will caravan to King Estate winery to meet with Michael Shippey, an environmental restoration consultant, who will present an overview of a woodland, meadow, and wetland restoration project on the winery property. Please bring a picnic lunch to enjoy during this presentation. After the overview and any questions, we will finish our lunch and have the opportunity to tour some of the restoration site. We plan to be done by 1:00 pm.





Message... *continued from page 1*

#2. Blachly Watershed Workshop – Stream Restoration Planning and Meadow Knapweed Tour, Saturday, July 28, 8:00 am – noon.

Both aspects of this workshop will be presented in detail at the evening forum planned for Wednesday, July 25. The forum will present issues and community opportunities related to managing the noxious meadow knapweed that has become prevalent in the Horton area. We will also present an overview of stream restoration planning in the works for Swamp Creek. The July 25 forum will be held at 6:30 pm at the Triangle Lake Grange, pending site availability.

For the Saturday, July 28 workshop, meet us on Swamp Creek Road in Blachly approximately four miles up the road from the round barn off Highway 36. Our tour site starts at the road crossing over Swamp Creek. This section of road is controlled by the Bureau of Land Management (you will pass the "End County Maintenance" sign about one-quarter mile before our meeting point). Here we will meet with Leo Poole, Fisheries Biologist with the BLM. Leo and I will discuss the culvert replacement planned on Swamp Creek Road and the considerations that are taken into account when planning culvert replacements. We will hike up the BLM access road along Swamp Creek and point out other stream restoration and land management issues that are being considered for a comprehensive stream restoration project. The project has the potential to include three culvert removals, large wood placement in the stream for fish habitat, fencing projects to keep livestock out of the stream, tree plantings and riparian restoration, and dump site clean-ups to prevent toxics from impacting water quality. The project is currently being planned with the BLM, Weyerhaeuser, and SWC as partners. We will also explore opportunities for private landowner stream projects along Swamp Creek to further enhance the fishery potential for coho salmon, cutthroat trout and other species.

After we have finished our hike along Swamp Creek, we will reconvene at a site to discuss meadow knapweed infestation. Landowners will learn to identify the plant and see how it becomes pervasive in pasture lands. Depending on the site visited, we plan to explore project opportunities for reclaiming pasture from knapweed while also restoring riparian corridors along streams.

3. Mapleton Watershed Workshop – Restored Stream and Birding Tour, Saturday, August 11, 8:00 am – noon.

Meet us in Mapleton at the intersection of Sweet Creek Road with Highway 126 just east of the Siuslaw River bridge. From there we will caravan and carpool to Karnowsky Creek, which is approximately eight miles from the meeting area. At Karnowsky Creek, we will learn about the project planning that went into the restoration of the entire stream valley of this small estuary tributary. This is a premier restoration project that has been a multi-year effort of the Siuslaw Basin Partnership. The Partnership won the Thiess International Riverprize awarded in Brisbane, Australia in 2004 for the outcome of the Karnowsky Creek restoration and similar projects. On our guided tour visitors will see the creek valley in transition from former pasture to a floodplain full of large wood, willow thickets, hummocks, and other elements that make it excellent rearing habitat for juvenile salmon. Karnowsky valley and the tidal wetlands at the bottom of the valley are a perfect location for birders, with many species of birds and waterfowl present throughout the year. Attendees will get to see and hear these birds and learn about them from a tour guide. Bring your binoculars!

These workshops are all free and open to everyone. Please join us at as many of these special Saturday events to enjoy and learn about the watershed as you can make. *The workshops and our summer youth camps are made possible in part by an education grant from the Oregon Watershed Enhancement Board.*

Siuslaw Watershed Council

Tel: 541-268-3044

Fax 268-3045

Staff

Coordinator: *Todd Miller*

coordinator@siuslaw.org

Administrative Assistant:

Ginger Fincher

watershed@siuslaw.org

Monitoring Coordinator:

Liz Vollmer-Buhl

monitoring@siuslaw.org

nativeplants@siuslaw.org

Executive Committee

Chair: Steve Elliot

Vice Chair: Dave Eisler

Secretary: Wesley Voth

Treasurer: Nancy Nichols

Representatives:

Barbara Beers

Paul Chapman

Jim Grano

Noland Huntington

SWC General Meeting Calendar and Review

May General Meeting

A rather small turnout, especially in the wake of the herbicide forums, attended the May meeting. However, the group proved to be an excellent representation of landowner, commercial, and agency interests and perfectly sized to discuss the biennial council self-evaluation. The self-evaluation process is a mandatory review process and reporting requirement of our OWEB grant, and the results of this self-evaluation were very constructive. Among the improvements recommended were maintaining the high-quality newsletter articles and community forums that we have achieved over the past two years. We propose to accomplish that by hosting one specially planned forum per quarter, accompanied by an in-depth quarterly newsletter. Regular monthly general council meetings will continue.

June General Meeting

Wednesday, June 27, 6:30 pm, Mapleton Grange, East Mapleton Road, Mapleton. Guest presentations:

- 1) **Wildfire and Watersheds**—Presenter Paul Adams will host this special presentation prepared by the Oregon Forest Resources Institute (OFRI) for Oregon communities. Paul Adams is a Professor and Forest Watershed Extension Specialist in the Forest Engineering Department at Oregon State University. OFRI is a state agency created by Oregon's Legislature to improve public understanding of Oregon's forest resources, including how our forests can be managed to meet environmental, social and economic needs - and to provide landowner training in environmentally sound forest practices.
- 2) **Knowles Creek Life Cycle Monitoring Results**—Presented by Knowles Creek project team members Jeff Jackson, Ralph Lampman, and Charley Dewberry. This presentation will cover the results of the OWEB-funded project to run the Knowles Creek smolt trap this spring and present other information related to how the fish numbers are doing on this important creek located in Mapleton.

July General Meeting

Wednesday, July 25, 6:30 pm, Triangle Lake Grange (location tentative pending availability), Blachly. Special community forum: Horton Meadow Knapweed – explore the threats this noxious weed poses in the Horton area and how landowners and agencies may be able to work together to help suppress and eradicate it. Attendees will also learn about the Swamp Creek stream restoration planning effort and opportunities to get involved.

August General Meeting

Wednesday, August 29, 6:30 pm, location to be determined. Annual volunteer appreciation picnic.

Water Quality Monitoring Updates

- Learn about water quality in your neighborhood. Check out the website (www.siuslaw.org) for updated graphs of WQ data. Graphs are rotated 1-2 times a month.
- We are wrapping up the 2006-2007 OWEB Monitoring Grant at the end of the month. As of July 1, we will be working under the 2007-2008 OWEB Monitoring Grant that our volunteers worked so hard to secure. Thanks again to Jeanne Ginter, Corena Freel, and Christina Logan for speaking to OWEB and members of the Oregon State Legislature about the importance of the program.
- Congratulations and best wishes to long-time volunteer Corena Freel on her graduation from Mapleton High School and entry into the US Navy.
- Upcoming VWQMP Days: July 17, 2007 and August 21, 2007. Temporary lab location to be announced.
- Contact Liz Vollmer-Buhl, monitoring@siuslaw.org, with any questions.



Council News and Business...

SWC Office Closed for Summer

Please note that the SWC office will be closed during the week of July 2 through July 6 for staff time off. When we return on July 9 we will start packing up the office to prepare for an extended remodel of the building being conducted by the Forest Service. Starting this fall, some Forest Service staff will be returning to Mapleton from the Florence offices and sharing the building at the Upper Compound with us. In preparation for returning staff, the building is undergoing an overhaul that will include interior construction, new windows, recarpeting, and painting. The remodel is projected to start as early as mid-July and may last through October 1. We are hoping to set up a temporary office in the bunk house adjacent to our current office, but mostly we plan to be working from home in between our extensive summer field schedule. Please bear with us during this interruption. E-mail will remain the best way to communicate with staff.

New Industrial Timber Leadership Board Representative

Our long time colleague Phil Adams of Roseburg Resources has been replaced as Smith River District Forester by Mark Wall. Mark will be filling Phil's role as alternate Industrial Timber rep on the SWC leadership board and as a Tech Team participant. Phil assures us that we will still see him around. Phil is now Oregon Lands Manager based in Dillard.

June Tech Team Summary

The SWC Tech Team met on June 7 and discussed the following items related to SWC projects and project development.

Culvert Projects Postponements: due to mounting engineering, planning, and pending funding agreement issues, the four major culvert projects anticipated for summer 2007 are being postponed until 2008. The Tech Team met with Forest Service and Lane County engineers to discuss the design and constructability challenges being faced as we entered the final planning stages for the projects. The Walker Creek culvert redesigns proved to be more extensive than partner staff time allowed and funding dedicated for the engineering awarded late in 2006 has not yet been formalized to pay for the engineering services required to get the project completed this summer. The Elk Creek culvert replacement permit has been approved; however, a time and cost issue involving placement of culvert footings had not been resolved in time for Lane County to dedicate its road crew for the August project date. The Knapp Creek culvert replacements have also been permitted. SWC is currently working with Lane County and funding partners to determine if replacing one of the two culverts slated through this project is feasible for summer 2007. It is also possible that the Holland Creek culvert replacement in Alma can be completed this summer if the same issues involving Elk Creek do not prove to be an obstacle for construction this year.

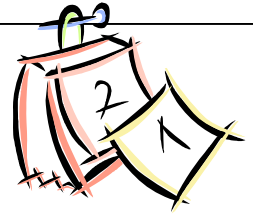
Action Plan: The Team was updated on Restoration Priorities and Action Plan activities being conducted by SWC and SWCD staff. Initially OWEB was to fund SWC to complete a Restoration Priorities summary for the Siuslaw Watershed, but now will be seeking SWC assistance and hiring a contractor to complete the priorities for the entire North Coast region.

Grant Writing: SWC and SWCD staff and partners brought a proposal writing team issue to the attention of the Tech Team to help improve the efficiency of completing good grant proposals. It was determined that no tech team members outside of SWC and SWCD were likely to be available for regular team grant writing efforts.

Stream Restoration Projects: The Team was briefed on potential projects involving culverts and stream restoration on Swamp Creek in Blachly and Cleveland Creek in Tide. The potential for full fish passage and stream restoration on Schoolhouse and Hanson Creeks along the estuary associated with ODOT's planned regrade of Highway 126 was also discussed.

Summer Workshops: Staff reviewed the summer camp, Saturday workshops, and community forum schedules and solicited further participation in the watershed education programs.

Siuslaw Watershed Council Calendar



June 27—Siuslaw Watershed Council General Meeting: 6:30 pm, Mapleton Grange, E. Mapleton Road.

July 2—Siuslaw Soil and Water Conservation District Meeting: 7:30 pm, SWCD office, Florence Business Center, 1525 12th Street, Florence *(Use main entrance, please call 997-1272 before coming so that the main door can be opened for you.)*

July 11—SWC Exec. Committee Meeting: 5:30 pm, Upper Compound, Mapleton.

July 12—SWC Technical Team Meeting: 9:30 am, Upper Compound, Mapleton.

July 14—Lorane Watershed Workshop—Noxious Weed and Woodland Restoration Tour: 8:00 am-1:00 pm, see page 1 for details.

July 17—Monthly Siuslaw Volunteer Water Quality Monitoring Day.

July 23-July 27—Summer Watershed Exploration Camp (Introductory Series): Check website, www.siuslaw.org, for more information or call the Council office, 541-268-3044.

July 25—Siuslaw Watershed Council General Meeting, Meadow Knapweed Forum: 6:30 pm, Triangle Grange—tentative meeting site, see next newsletter for confirmation.

Calendar continued on page 6...

The Siuslaw Watershed Council is a non-profit , 501c3, organization . All donations are tax deductible to the full extent of the law.

Siuslaw Watershed Council Membership Form

Type of Membership:

Landowner _____ Community Member _____ Industry _____

Government Agency: _____ Tribal: _____

Name: _____ **Today's Date:** _____

Address: _____

Telephone: _____ **E-mail:** _____

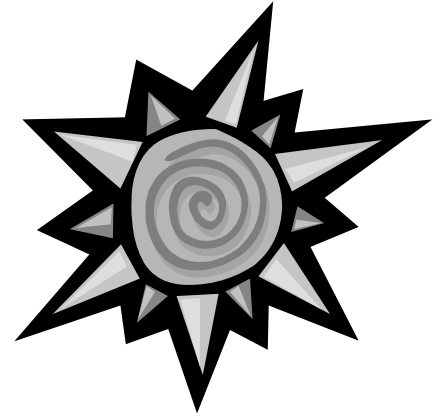
Please choose any of the following:

- Tax-deductible membership enclosed (\$10 regular, \$0 students).
- Additional tax-deductible donation enclosed. Amount \$ _____
- I am interested in volunteer opportunities with the Siuslaw Watershed Council

June 2007



**Siuslaw Watershed Council
General Meeting Agenda
June 27, 2007
Mapleton Grange Hall
6:30 p.m.**



- 6:00-6:30** **Open for set-up**
- 6:30– 6:35** **Welcome and Introductions**
- 6:35-7:20** **Presentation:** *Wildfire and Watersheds: Paul Adams, Oregon Forest Resources Institute (OFRI). See page 3 for presentation description.*
- 7:20-7:35** **Break**
- 7:35-8:10** **Presentation:** *Knowles Creek Life Cycle Monitoring Results: Knowles Creek Project Team Leaders. See page 3 for presentation description.*
- 8:10-8:15** **Reports and Updates**
- 8:15-8:30** **Open Mic** *(3-5 speakers, 3-5 minutes each)*
- 8:30** **Announcements & Adjourn**

SWC Calendar... *continued from page 5*

July 28—Blachly Watershed Workshop—Swamp Creek Stream Restoration and Meadow Knapweed Tour: 8:00 am-noon, see page 2 for details.

August 9 & 10—Summer Watershed Exploration Camp (Advanced Series): Check website, www.siuslaw.org, for more information or call the Council office, 541-268-3044.

August 11—Mapleton Watershed Workshop—Karnowsky Creek Stream Restoration and Birding Tour: 8:00 am-noon, see page 2 for details.

August 29—SWC Annual Volunteer Appreciation Picnic: 6:30 pm, location to be announced.

Attention Horton Area Landowners! Please share with your neighbors!

Meadow Knapweed Forum to be held Wednesday, July 25 in Blachly

SWC has joined the Meadow Knapweed Working Group to help multiple partners work with local landowners on achieving solutions to controlling the spread of the invasive noxious weed, meadow knapweed, which has become pervasive in Horton. Please join us on Wednesday evening, July 25, at 6:30 pm, Triangle Lake Grange (tentative location pending availability) to learn about this plant, how it is detrimental to pasture lands and native habitats, and possibilities for landowners and agencies to develop a control solution together. Partners include the Bureau of Land Management, Oregon Department of Transportation, Lane County, and Oregon Department of Agriculture. A special notice from the Institute for Applied Ecology on the project is presented below.

Institute for Applied Ecology

Dedicated to native ecosystem conservation, research, and education

563 SW Jefferson Ave, Corvallis, OR 97333 phone: 541-753-3099 fax: 541-753-3098

Dear Landowners,

We'd like to inform you of an exciting project that we are starting in the Horton area. The purpose of this project is to develop effective control methods for an invasive, non-native forb, meadow knapweed (*Centaurea x pratensis*), with emphasis on reducing spread of this species along roadways.

Meadow knapweed is rapidly invading pastures, intact prairies, and roadways in Oregon, Washington, and Idaho, with the heaviest infestations in Lane and Douglas Counties, Oregon. A multi-agency, multi-disciplinary team, the Meadow Knapweed Working Group, has been formed to address concerns and needs for this species. Their recommendations include reducing the spread of the species from currently invaded areas as well as developing new methods for control, especially on roadsides. This species reproduces and spreads by seed, so containment of meadow knapweed must include reducing or eliminating seed production. While herbicides have been relatively effective at controlling meadow knapweed, this control method is not available in many situations. Unfortunately, effective and efficient alternatives to herbicides have not yet been identified. Mowing, grubbing (pulling), and solarization (covering with a thick, dark cloth) have been anecdotally reported to having varying levels of success, yet these methods have not been compared in a replicated, controlled setting. This project will test combinations of mechanical removal (mowing twice a year, grubbing/pulling, and solarization) with mulching and seeding with native grasses to control and suppress meadow knapweed. This experiment was initiated in June 2007 and will continue through at least 2008. In addition to a site on Bureau of Land Management property, the Lake Creek Rural Fire District has agreed to let us use the field near their garage in Horton as a demonstration area. It is our hope that this project can provide useful information to all landowners who are battling this invasive weed.

If you have any questions or concerns about this project, please contact:

Andrea Thorpe, Ph.D., Director, Conservation Research Program

athorpe@peak.org

Benefits of Riparian Vegetation

Participants in the Native Plant Distribution are enhancing our watersheds. Most landowners know that riparian vegetation can help decrease a loss of streambank property and can provide cooling shade for salmon. What follows is not an exhaustive list, but contains several important benefits. A buffer of native riparian plants can also promote the health of the watershed and increase property values through the following methods:

- Trapping contaminants and excess nutrients, thus preventing the contaminants from decreasing water quality. For example, contact with excess E. Coli can lead to illness in swimmers and clammers.
- Complex riparian vegetation can slow the run-off of rainwater and decrease flooding.
- Native riparian plants provide optimal habitat for native species of frogs, song-birds, and insects.



As the leaves from streamside plants, like Red Alder and Big Leaf Maple, break down they provide food for insects that are prey to salmonids.

Siuslaw Watershed Council Mission Statement

The Siuslaw Watershed Council supports sound economic, social and environmental uses of natural and human resources in the Siuslaw River Basin. The Council encourages cooperation among public and private watershed entities to promote awareness and understanding of watershed functions by adopting and implementing a total watershed approach to natural resource management and production.

• Community • Economy • Environment

S IUSLAW
WATERSHED COUNCIL

P.O. Box 422 • Mapleton, Oregon 97453 • 541-268-3044

www.siuslaw.org

watershed@siuslaw.org

What's Happening In Your Watershed?

Siuslaw Watershed Exploration Camps

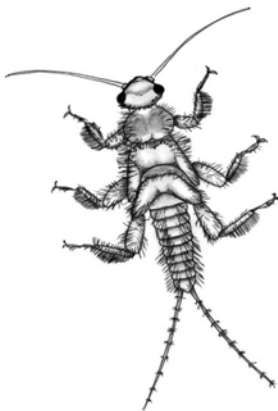
Free!

Siuslaw Watershed Council

Intro Camp July 23-27

Open to students entering 6th-12th grades.

Explore Fish, Geocaching, Mountain Biking, Photography, Logging, Mussels, Native Plants, Forests, Streams, and More!



Advanced Camp—August 9 and 10

Open to all students entering 8th through 12th grades. Priority consideration given to past camp participants, Stream Team members, and SWC volunteers (WQ, Native Plant Nursery, Knowles Creek, etc.), and upper grade levels.

Stream Snorkeling, Farm Tour, Photography, and a Kayak Trip on the Siuslaw Watertrail!!

Day camps

Funded through an Oregon Watershed Enhancement Board Education Grant.

A \$10 donation is requested to cover registration costs.

Information: 541-268-3044, www.siuslaw.org